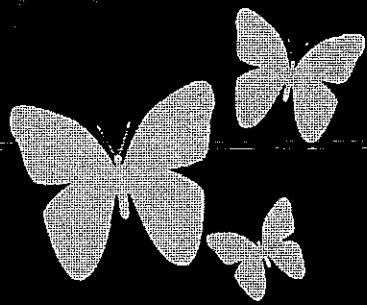


# 2018- 2019 SYLLABUS



## 6<sup>th</sup> Grade ORMS

*Somewhere something is waiting  
to be known. Never stop  
questioning.*

August 2018

# science

hypothesis

prove

understand

analysis

predict

calculate

interact

research

think

## Mrs. Pineda

**NEVER  
TRUST  
an ATOM  
THEY MAKE UP  
EVERYTHING**



## Welcome to 6<sup>th</sup> Grade Science!

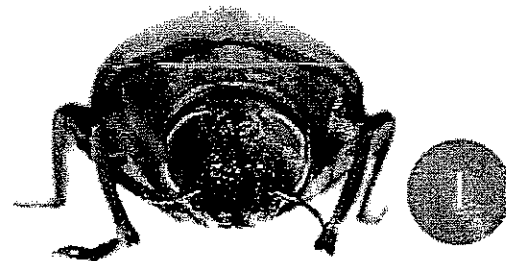
Sixth grade is an important transitional year in the academic career of students. It will be an exciting year for all of us as we work together to learn about the many areas of science including fundamental skills and knowledge in physical, earth, and life sciences. This year, students will be exposed to a wide variety of methods for discovery in their science class.

The teachers in the 6<sup>th</sup> grade Science Department are Mrs. Beabout and Mrs. Pineda. We are looking forward to teaching your child and working closely with you throughout the school year.

The following is general information we hope you will find useful as we begin this new school year.

### Supplies

- ✓ Composition book
- ✓ Designated section in your binder for **SCIENCE**, and
- ✓ These supplies are used **DAILY**: pencil, grading pen, scissors, glue stick, colored pencils
- ✓ Charged ipad



**THINK  
SAFETY  
FIRST!**

## Grading

- Tests and projects are worth 50% of the student's grade,
- Daily work, lab investigations, and quizzes are worth 40% of the student's grade,
- Homework is 10% of the student's grade.

### Homework:

Each science teacher will assign homework to their classes when needed to reinforce what was learned in class. Students are responsible for completing their assignments according to the time frame explained by their teacher.

Homework can be turned in through a variety of avenues (classroom tray for paper, eBackpack, email, Stemsopes, etc.) per teacher instruction; make sure you know the correct turn-in procedure for each assignment.

### Late work:

Late work is graded in the same manner in all classes and courses. Students may turn in assignments after the given due date for a penalty of 10% for one day late, 20% for two days late, and 30% for 3 days late. After 3 days late, a grade of zero will be recorded. Chronic abuse may result in additional consequences.

### Absences and Tutorials:

When students are absent, they are responsible for following up on missed assignments. Students can look in various places for missed work including their teacher's website and iTunesU; it is a good idea to communicate with classmates as well. Students should work with their teacher to identify when the missed assignment is due. Morning tutorials are a good time to find out about missing work; but, students must have a note from a parent or teacher in order to attend.

**Mrs. Pineda's Tutorials Schedule:**  
Tuesdays & Thursdays  
8:00-8:15 AM & 3:35-4:00 PM.

### Classroom Rules:

It is particularly important to follow teacher's instructions and classroom rules in a science classroom. A contract concerning lab safety will be sent home within the first few weeks of school.

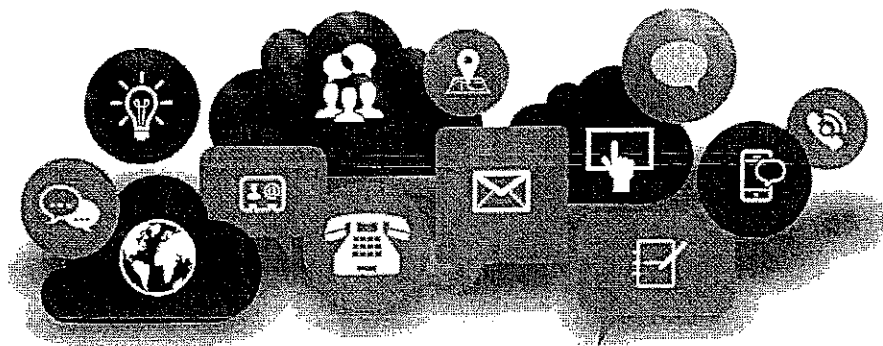
### Mrs. Pineda expects her students to:

1. Arrive on time with everything necessary for class.
2. Restroom and water breaks during passing periods only, except emergencies.
3. Contribute to a positive learning environment.
4. Always behave and perform to the best of their ability.
5. Bring a fully charged iPad to school each day.

### iPad Rules:

The iPad is a learning tool, not a learning distraction.

1. Use the Internet and camera only when instructed.
2. The sound should always be muted.
3. iPads should be put away, in a backpack or out of sight, at the start of class each day until instructed by the teacher to begin using the device.
4. When it is time to transition to another activity, stop using the iPad immediately and follow instructions.



Mrs. Pineda

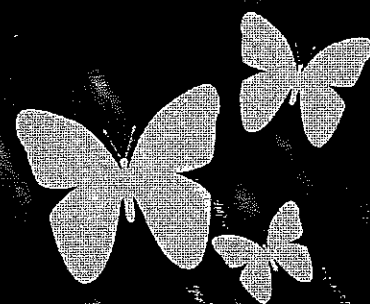
[epineda@nbisd.org](mailto:epineda@nbisd.org)

Conference Period:

10:58 – 11:45 am

830.629.8510

Room #611



**Parent, Student, and Teacher Communication:**

- Parents may use TxConnect to monitor grades.
- Use Notability, eBackpack, Stemsscopes, and iTunesU on your child's iPad to monitor assignment progress and assessments.
- On or before every Monday, I will update *Monday Mail* on my teacher webpage. This information will help parents become aware of the class agenda for the week. Significant dates, such as testing days, will always be included in the *Monday Mail* previous to the testing week. The link to my website is:  
<http://schools.nbisd.org/page/ElizabethPineda-Home> If you have any questions or concerns about your child or this class, please let me know. I will be glad to answer your questions or set up an appointment for a conference.

*I hope you and your child celebrate many successes this year!*

*Thank you for your support,*

Elizabeth Pineda  
6<sup>th</sup> Grade Science Teacher  
OakRun Middle School

Detach the portion below and return to your science teacher.  
Keep the syllabus for your records.

Coming together is a beginning. Keeping together is progress. Working together is success!  
Henry Ford

**Attention Students:**

**Ask a parent to read your science class syllabus and complete the portion below.**

My signature below indicates that I have thoroughly read the 2018-2019 6<sup>th</sup> Grade Science Syllabus provided during the first week of school. This syllabus contains important information about the course structure, supplies, grading, student expectations, classroom rules, and communication.

Parents/guardians can read *Monday Mail* for 6<sup>th</sup> grade science on the teacher's website.

Parent/Guardian Signature \_\_\_\_\_

Student Name \_\_\_\_\_

Student Signature \_\_\_\_\_

